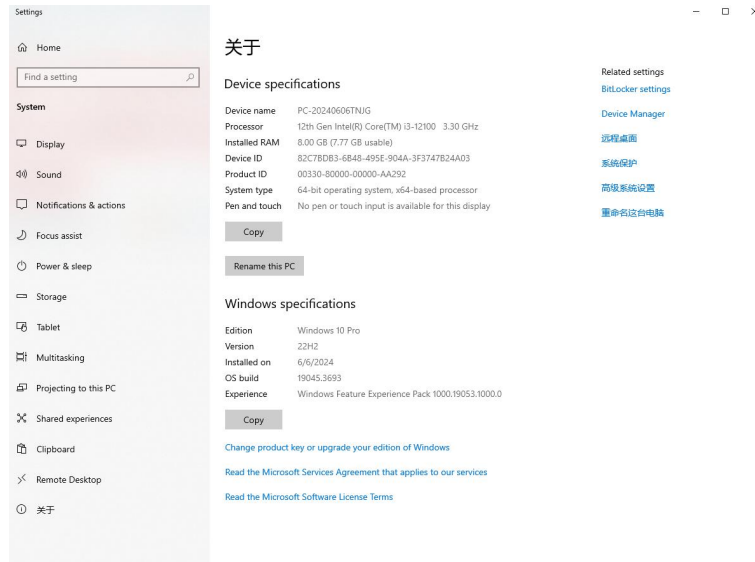


SWE Imaging Grayscale Analysis Software Installation

Installation



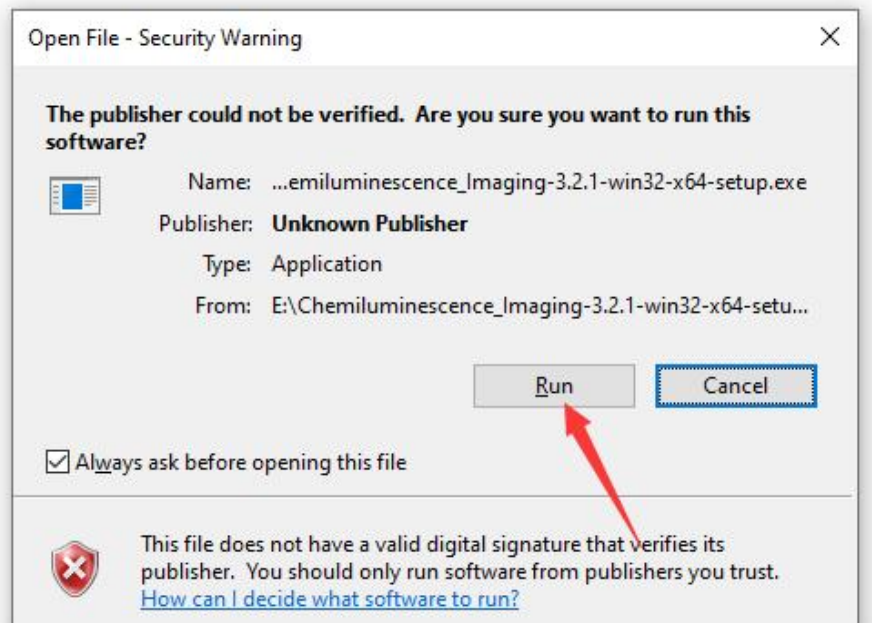
Reminder: Our software requires some program operation conditions. You must use a computer with Win10 64-bit operating system or above to use our software. Please make sure to close all anti-virus software and security managers during the installation or use of our software.

Check the computer configuration to determine whether it meets the installation requirements.

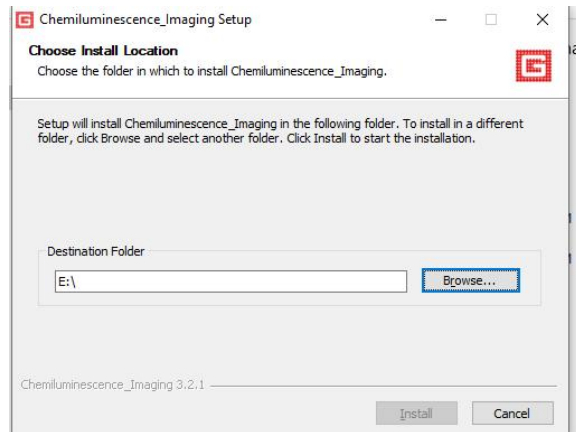


Install the software

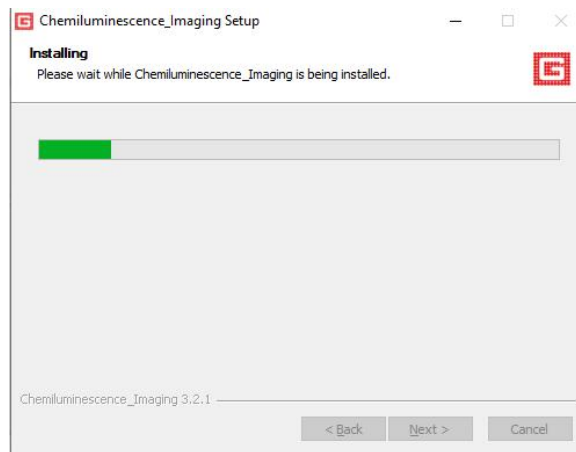
1. Double-click on this software

 Chemiluminescence_Imaging-3.2.1-win32-x64-setup.exe Chemiluminescence_Imaging-3.2.1-win32-x64-setup.exe 6/13/2024 8:51 AM

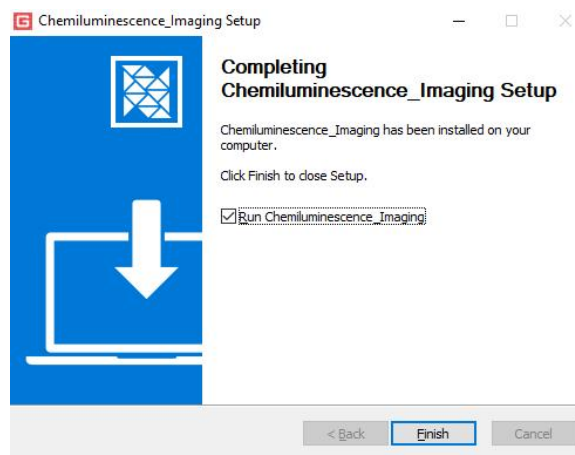
2. Select the installation path



3. Wait for the installation process



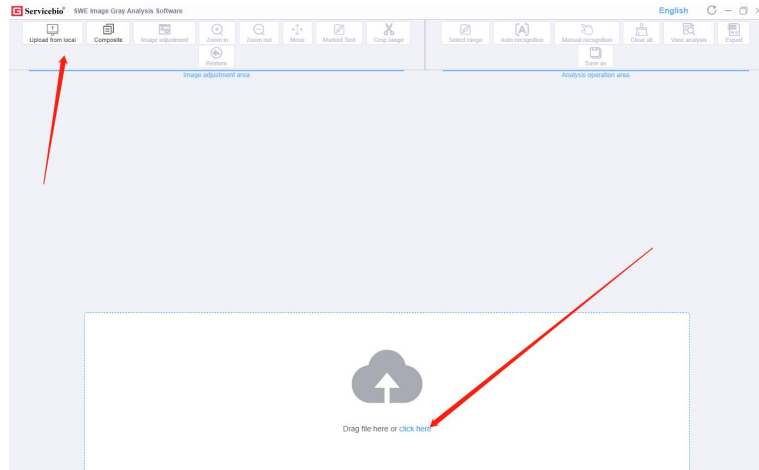
4. Installation completed



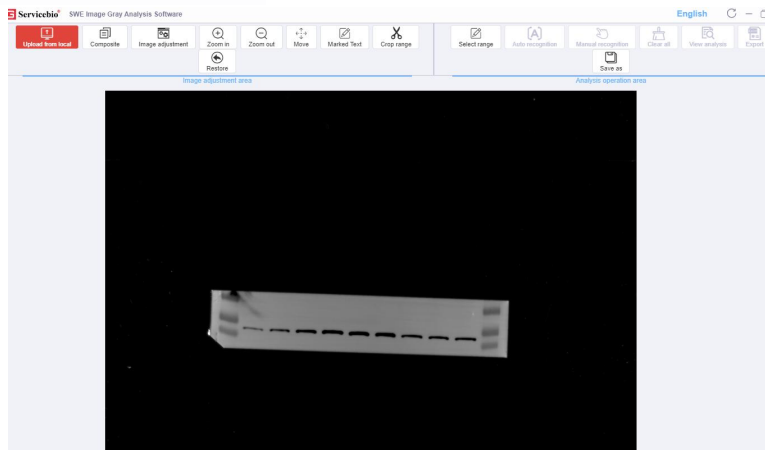
SWE Imaging Grayscale Analysis Software User Manual

Important note: To ensure optimal performance, please confirm that the uploaded band image is properly aligned.

1. Upload Image

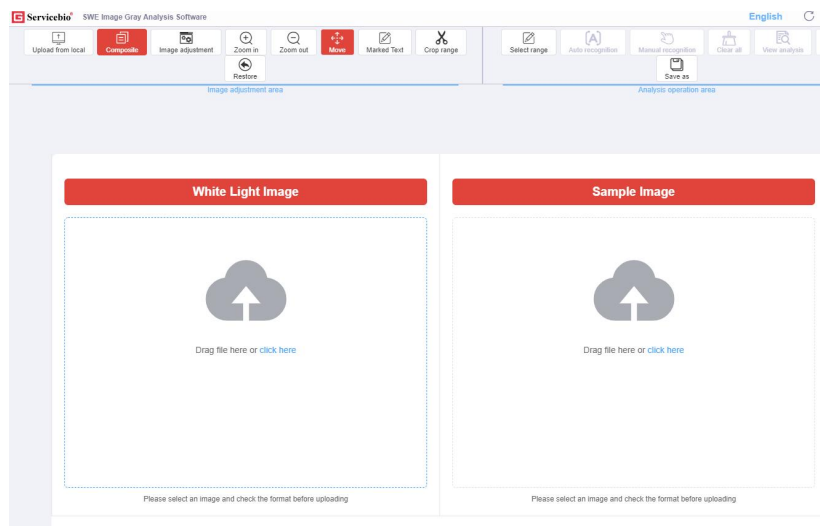


The image upload is successful as below:

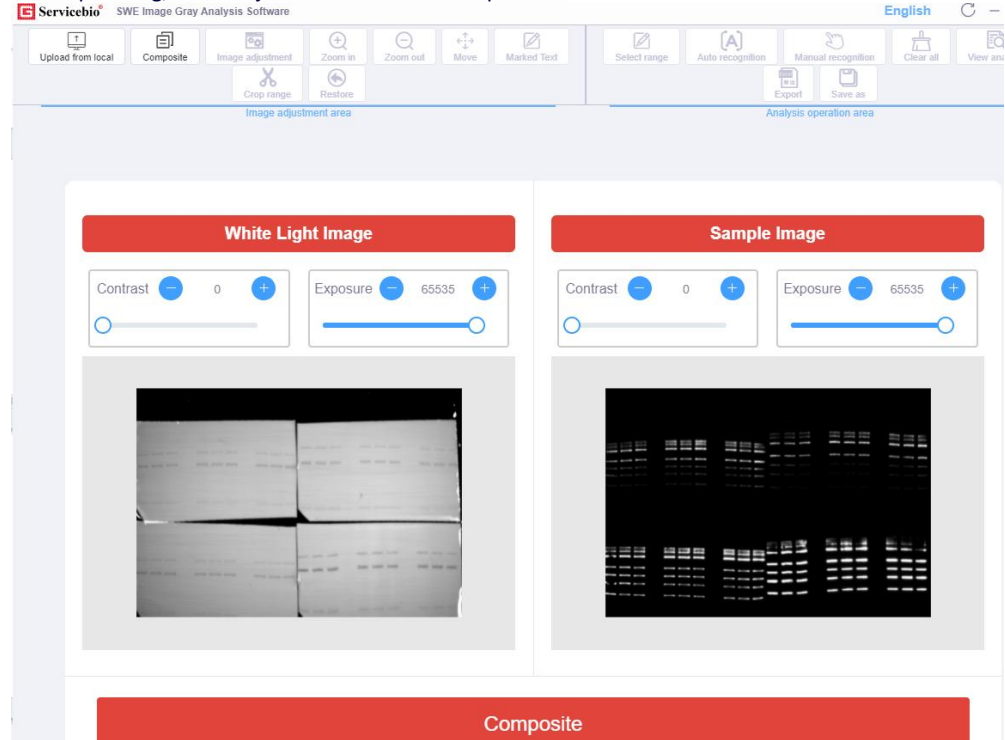


2. Composite

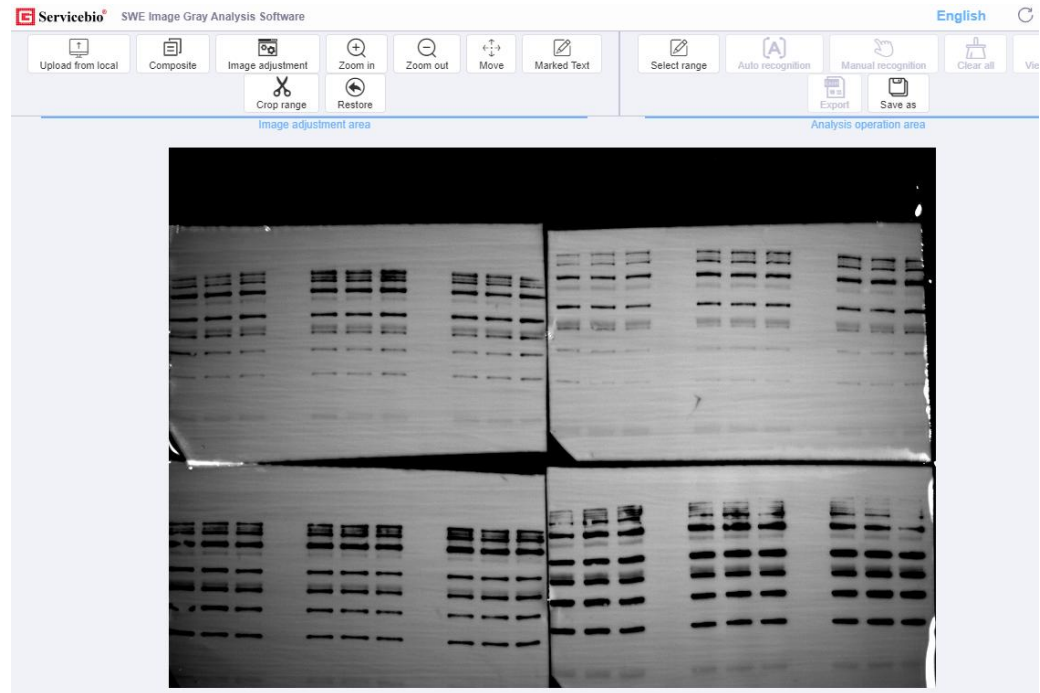
This function is used to composite a white light image and a sample image.



After uploading, it can adjust the contrast and exposure

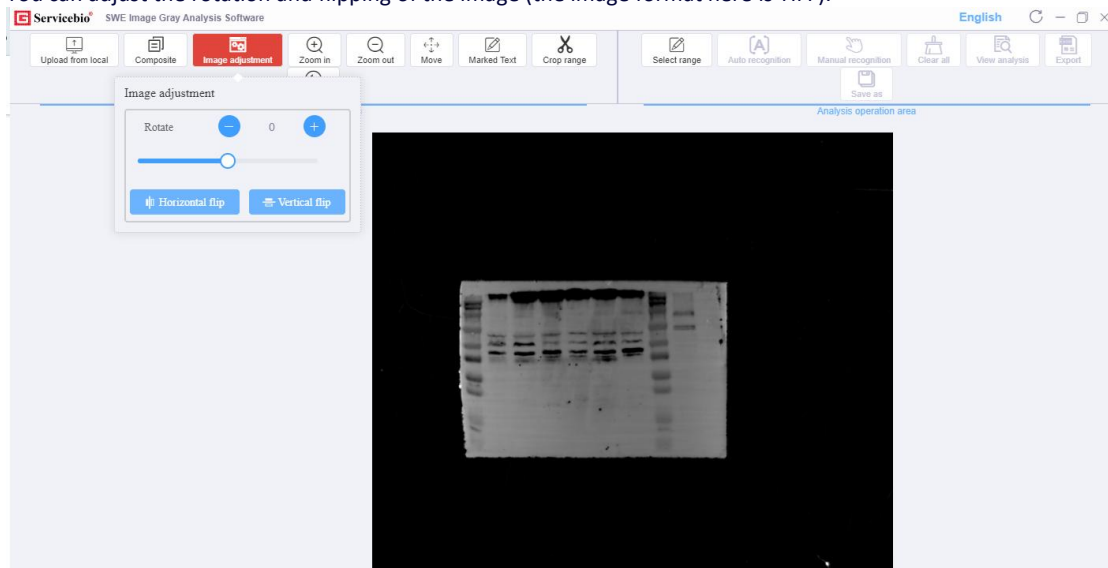


After making the adjustments, you can click on "Composite" to generate an operable image. The following figure shows the synthesized image.

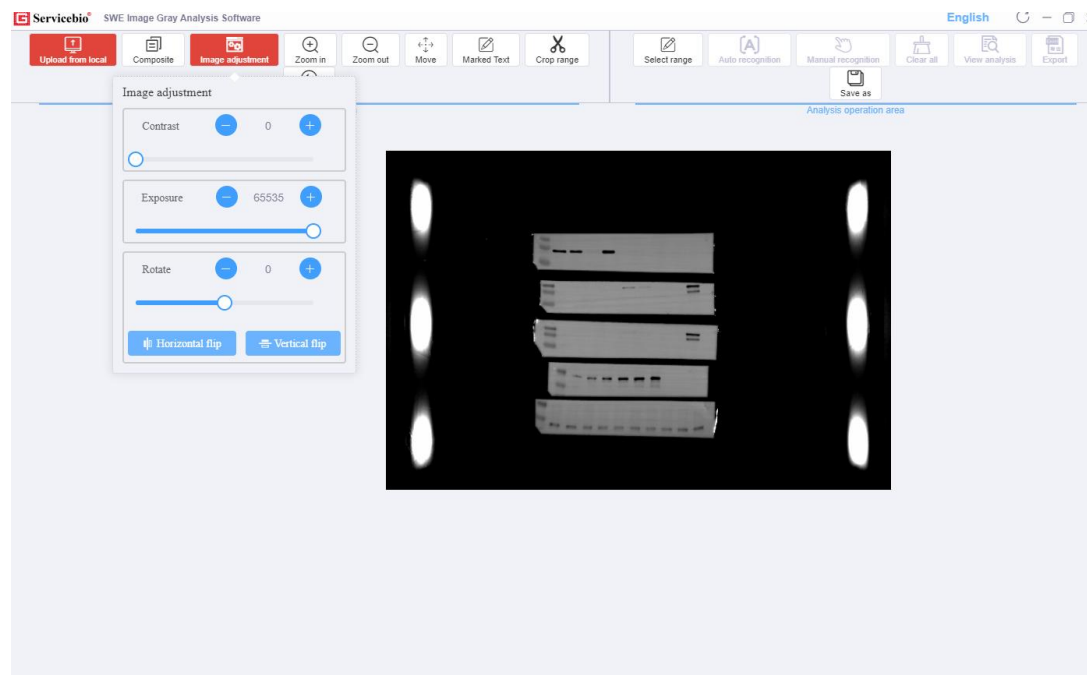


3.Imaging Adjustment

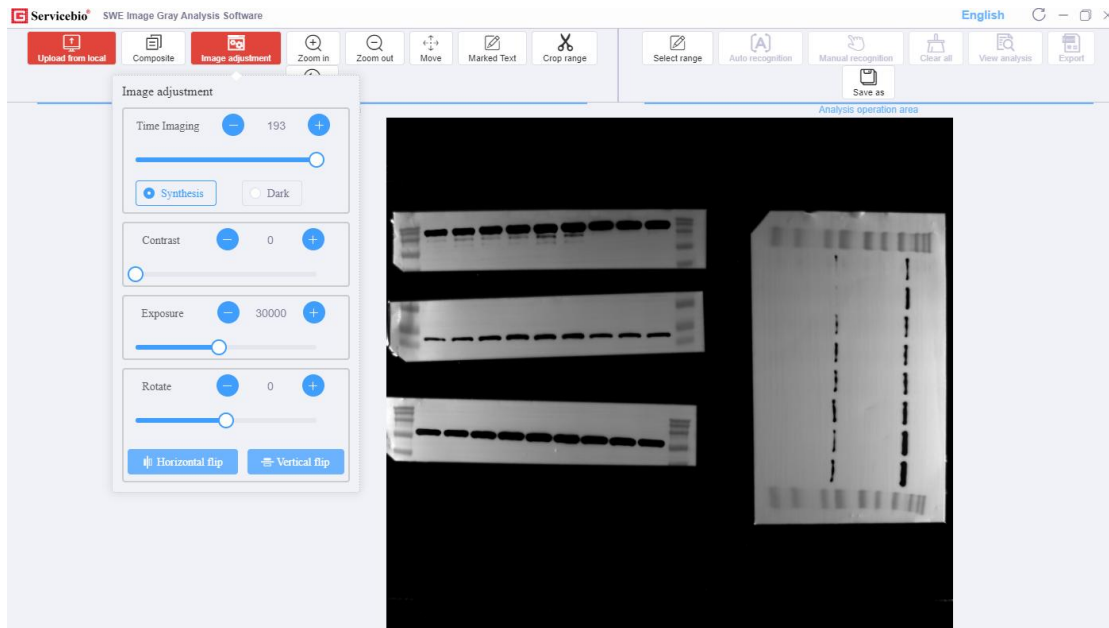
You can adjust the rotation and flipping of the image (the image format here is TIFF).



SWED2000: it can not only adjust the rotation and flipping of the image, but also set the contrast and exposure.



SWED 3000: After uploading, as shown in the following figure, dragging the time imaging picture can automatically update it. Meanwhile, you can also adjust the contrast and exposure, as well as switch between the synthesized image and the dark field image.



4.Zoom in Click to zoom in

5.Zoom out Click to zoom out

6.Move Click to move

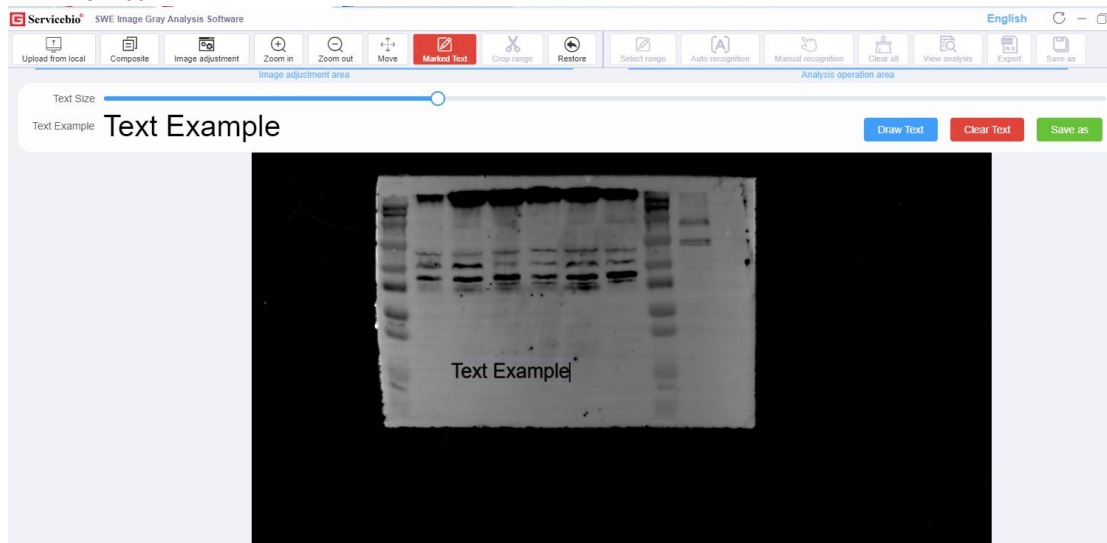
7.Mark Text

Clicking on "Mark Text", then click "Draw Text" to write on the image. After writing, you can also click on the text to make modifications.

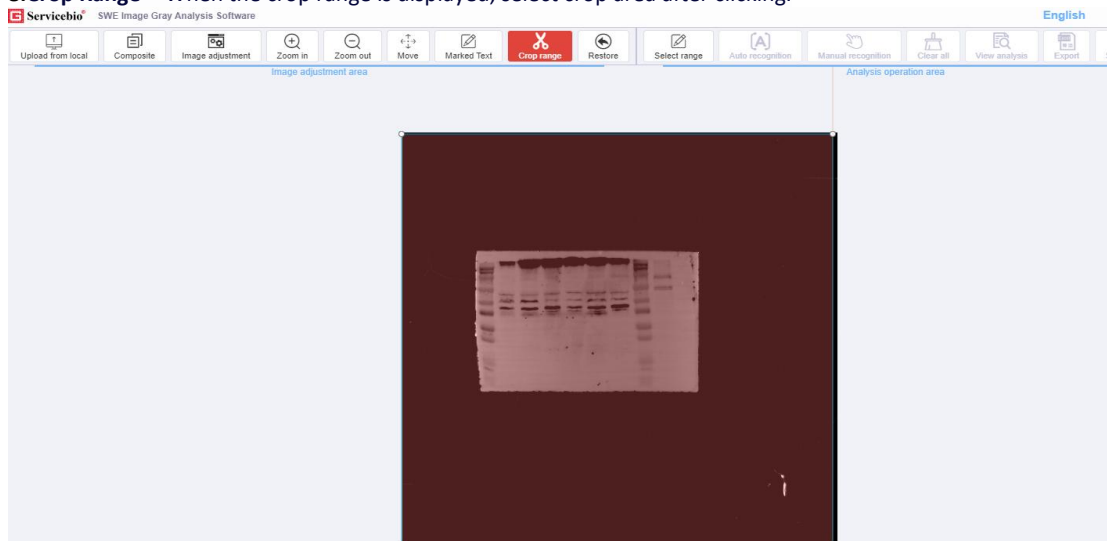
Clear Text: Clicking on this will remove all text.



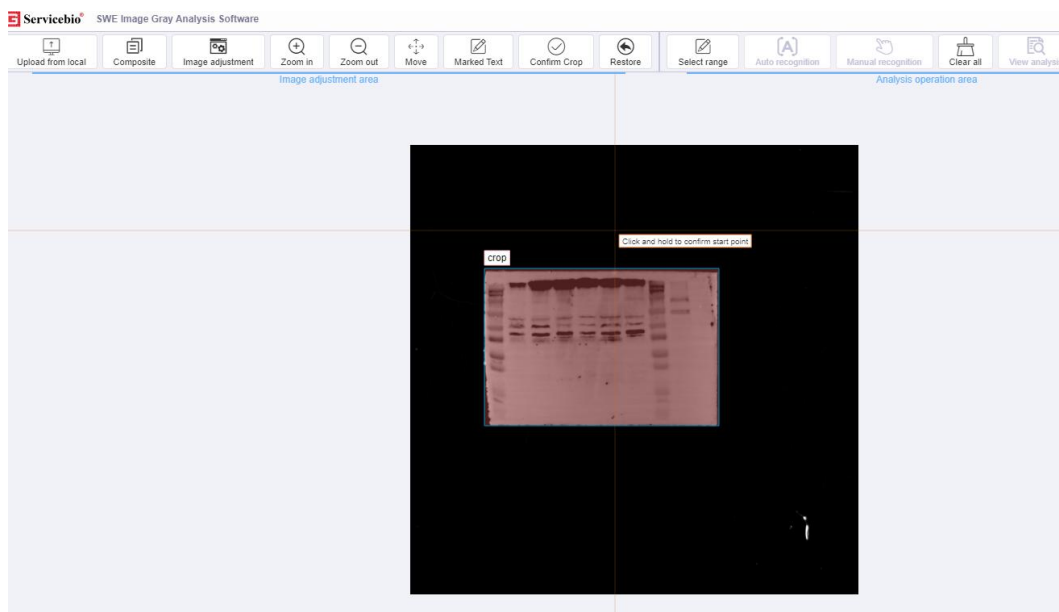
Save As: Once confirmed the text is written correctly, you can click "Save As" to store the marked image with text in TIFF format.



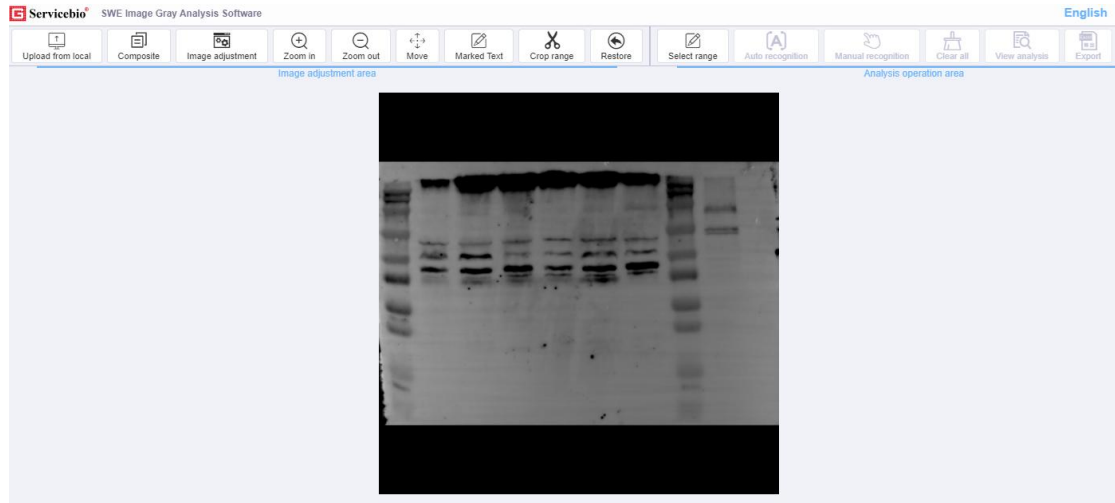
8. Crop Range When the crop range is displayed, select crop area after clicking.



After confirming the crop range, the "Crop Range" text will change to "Confirm Crop". Before clicking "Confirm Crop", you can also adjust the size of the crop range by clicking on it.

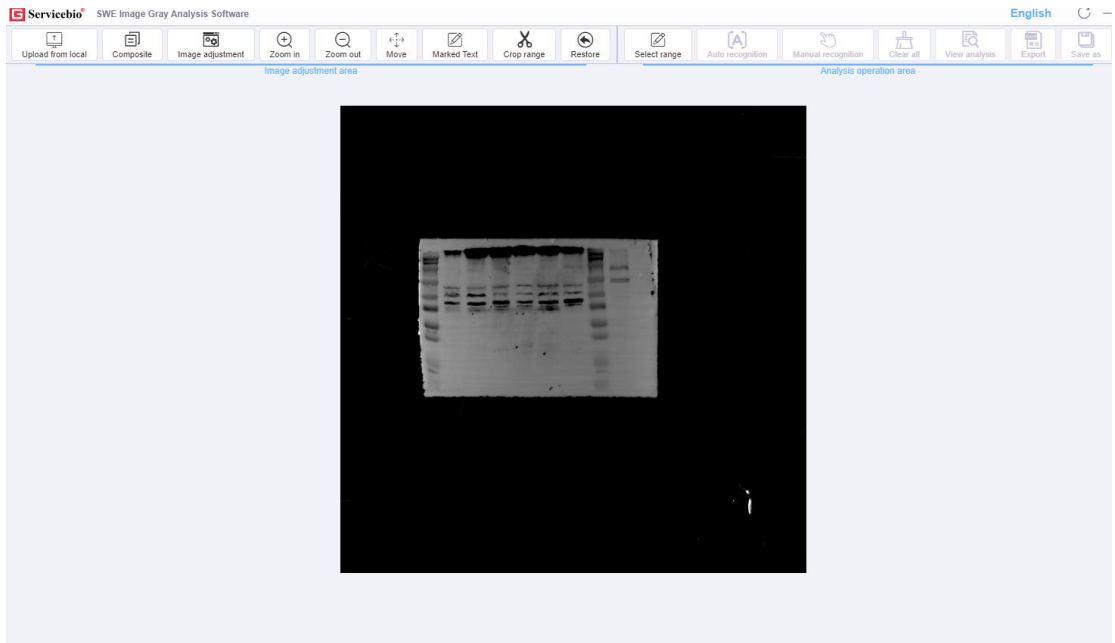


Click "Confirm Crop"



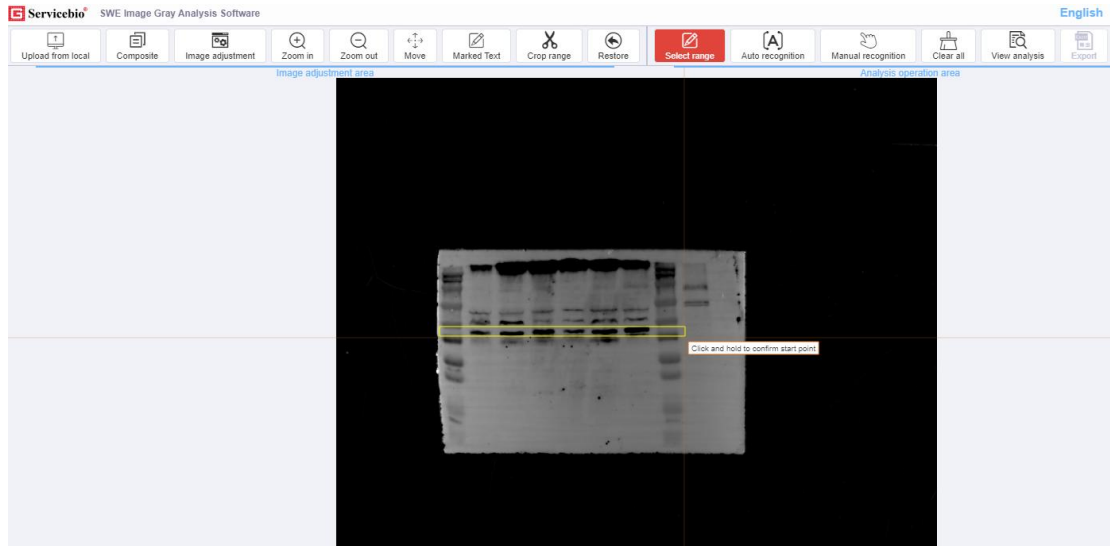
9. Restore

Clicking "Restore" will revert the image to its original state after uploading. The image below shows the restored image.



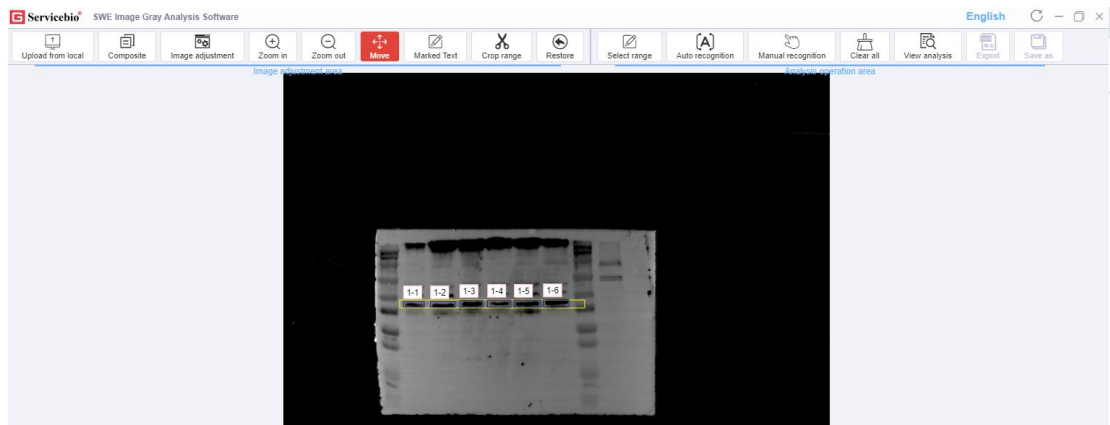
10. Select Range

Click here to start drawing the recognition range, which will be indicated by a yellow box.

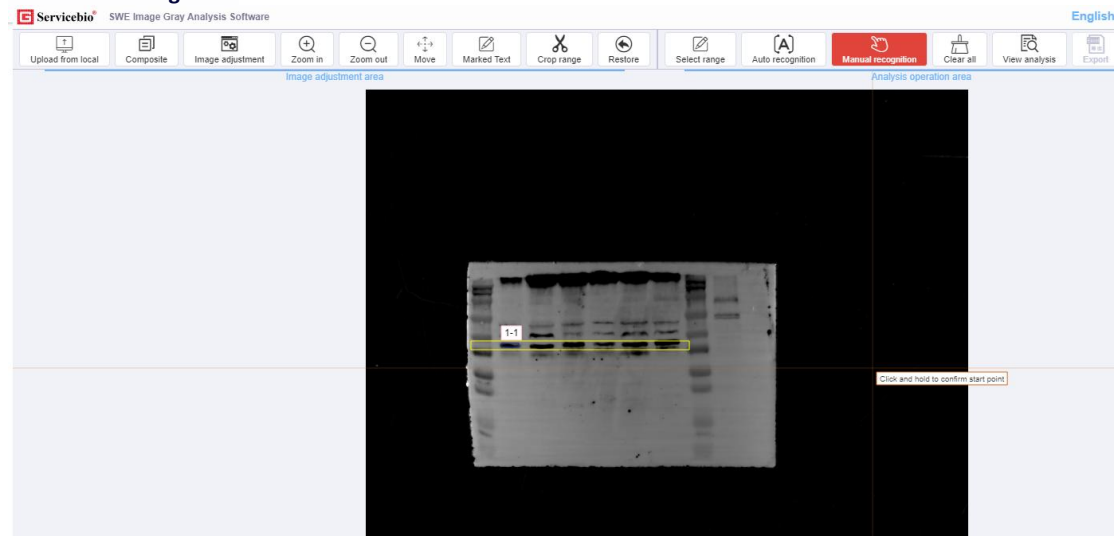


11.Auto Recognition

This function is operable only after drawing the yellow box. To automatically recognize the lanes within the yellow box, click on this option and the lanes will be recognized automatically.



12.Manual Recognition

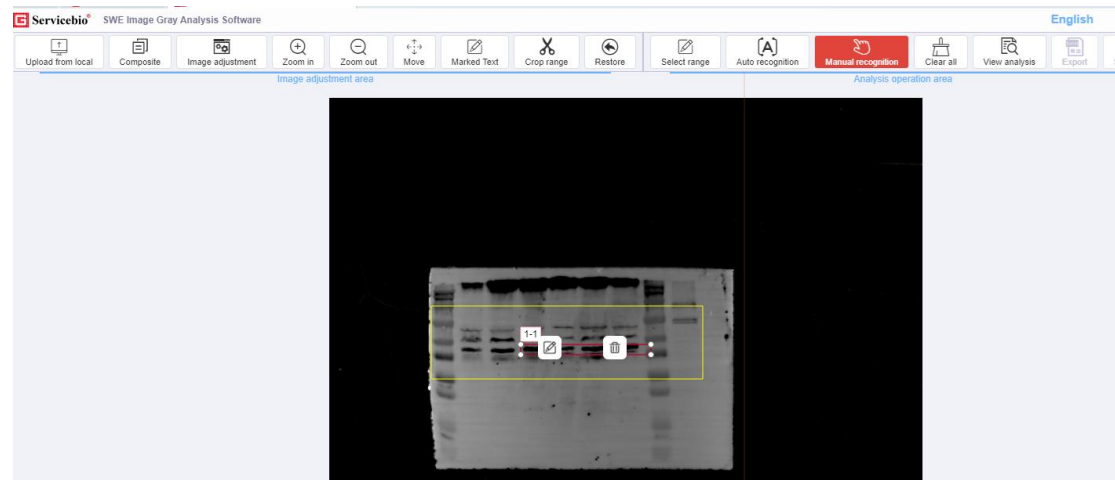


Drawing Instructions

Drawing Method: You can click on "Select Range" (corresponding to the yellow box) and "Manual Recognition" (corresponding to the blue box) to draw the corresponding boxes.

Selection Method: Clicking on a blue box will select it and turn it into a red box.

Deletion Method: As shown in the image, after clicking on a selected box, a deletion icon will appear. You can delete the box by clicking on the icon, or by selecting the current box and pressing the "Del" key on the keyboard.



Copy and Paste: Select the box you want to copy, which will turn red and display a deletion icon. Press Ctrl+C to copy.

To paste, first click the left mouse button, then press Ctrl+V to paste the same-sized box.

Modify the Code: When you double-click or click on the box, a deletion button and a modify button will appear. Clicking the modify button will display a pop-up window like the one below. After modifying and clicking "Yes" will successfully modify the code.

